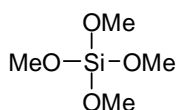


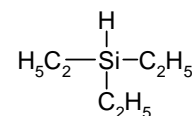
Tetramethoxysilane

Cat. P1001
C.A.S. 681-84-5
Formula C₆H₁₆Si
FW 152.22



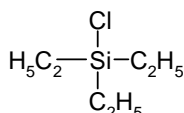
Triethylsilane

Cat. P1002
C.A.S. 617-86-7
Formula C₄H₁₂O₄Si
FW 116.28



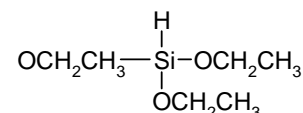
Triethylchlorosilane

Cat. S1003
C.A.S. 994-30-9
Formula C₆H₁₅ClSi
FW 150.73



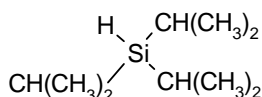
Triethoxysilane

Cat. S1004
C.A.S. 998-30-1
Formula C₆H₁₆O₃Si
FW 164.28



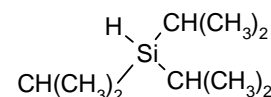
Triisopropylsilane

Cat. S1005
C.A.S. 6485-79-6
Formula C₉H₂₂Si
FW 158.36



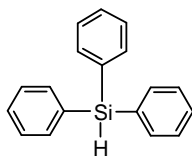
Triisopropylchlorosilane

Cat. S1006
C.A.S. 13154-24-0
Formula C₉H₂₁ClSi
FW 192.80



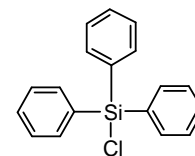
Triphenylsilane

Cat. P1007
C.A.S. 789-25-3
Formula C₁₈H₁₆Si
FW 260.42



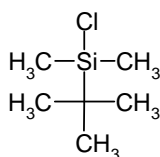
Triphenylchlorosilane

Cat. P1008
C.A.S. 76-86-8
Formula C₁₈H₁₅ClSi
FW 294.86



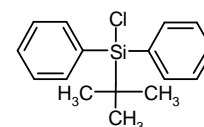
Tert-Butyldimethylchlorosilane

Cat. P1009
C.A.S. 18162-48-6
Formula C₆H₁₅ClSi
FW 150.73



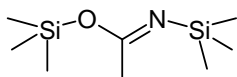
Tert-Butyldiphenylchlorosilane

Cat. P1010
C.A.S. 58479-61-1
Formula C₁₆H₁₉ClSi
FW 274.87



N,O-Bis(trimethylsilyl)acetamide

Cat. P1011
C.A.S. 10416-59-8
Formula C₈H₂₁NOSi₂
FW 203.43



Triphenylsilanol

Cat. P1012
C.A.S. 25561-30-2
Formula C₁₈H₁₆O₂Si
FW 276.40

